

## Upgrade Guidance for HD Cameras

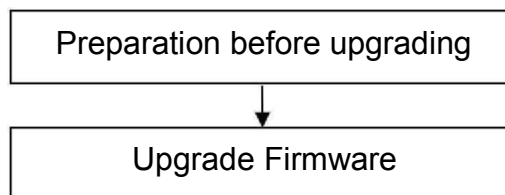
This firmware is for HD cameras C1,C1 V2,C1-Lite,C1-Lite V2,FI9800P,FI9800P V2,FI9803P V2,FI9803P V3,FI9816P,FI9816P V2. Please check your camera model on the bottom sticker. Updating with the wrong firmware could severely damage and/or break your camera. Please make sure the firmware is correct.

**Note:**

System firmware 1.9.x.1x, App firmware 2.x.1.28, 2.x.1.30, 2.x.1.32, 2.x.1.36, 2.x.1.37 or 2.x.1.39, 2.x.2.5, 2.x.2.16, 2.x.2.33, 2.x.2.37, 2.x.2.41, 2.x.2.43, 2.x.2.43,2.x.2.46, 2.x.2.47, V-2.x.2.49 can upgrade to this version.

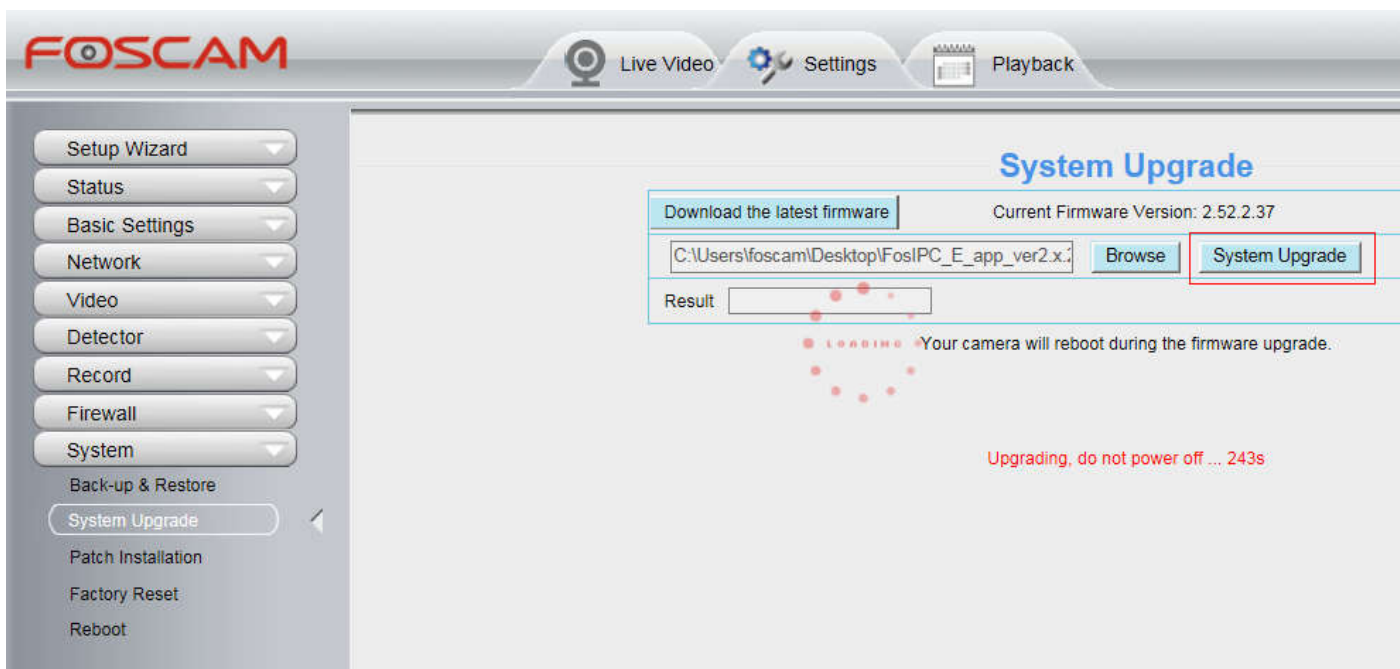
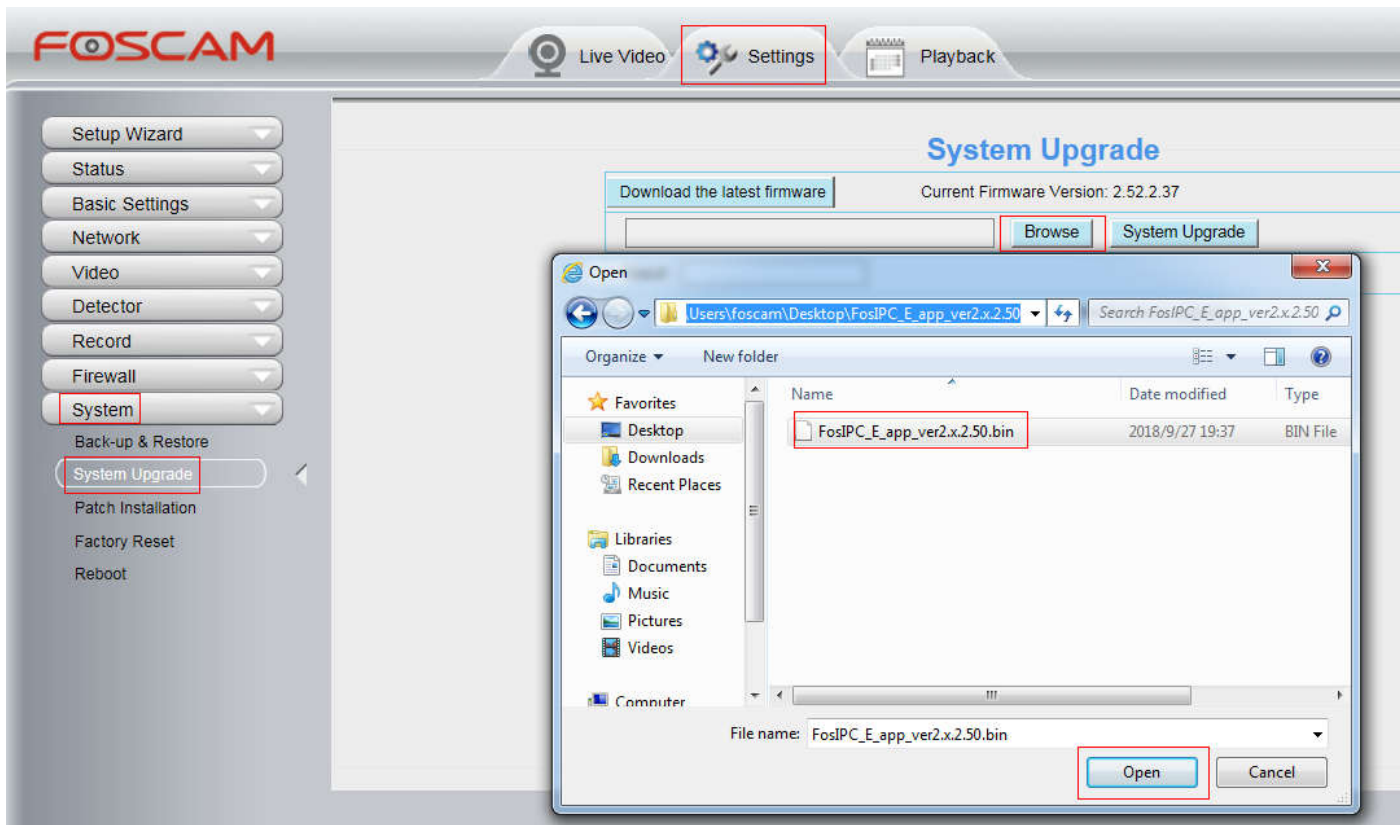
**If camera's system firmware is lower than 1.9.3.18, please upgrade the "FosIPC\_E\_sys\_ver1.9.3.18.bin" first.**

**If camera is upgraded to this firmware, it cannot be downgraded to previous firmware versions.**

**Preparation before upgrading:**

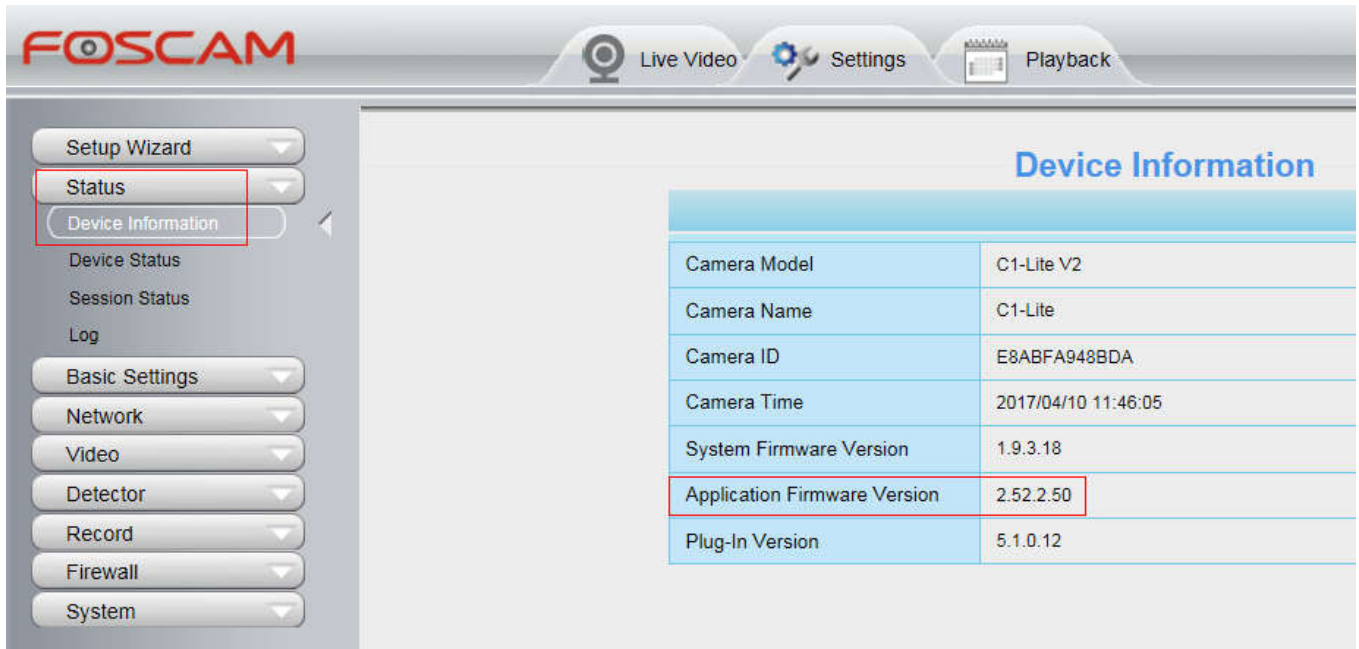
1. Please restart your camera before the upgrading;
2. Connect camera to router with an Ethernet cable before upgrading;
3. DO NOT upgrade firmware via wireless;
4. DO NOT upgrade firmware over internet, just finish it in LAN;
5. Keep power on during the upgrading;
6. Logging your camera as administrator first, upgrade firmware on web page.
7. Suggest to unplug SD card before upgrade.

**Step 1 :** Login your camera, go to **Settings-->System-->System Upgrade**. Click Browse/Choose File, find the file **FosIPC\_E\_app\_ver2.x.2.50.bin** you've extracted in your local hard driver, then click **Open**. Camera will upgrade after you click on **System Upgrade**.



**Note:** When “Upgrading, do not power off ... Xs” pop up, camera IP will disappear from the Equipment Search Tool. Then camera will reboot itself, DO NOT power off the camera, please wait till the camera IP reappear in the Equipment Search Tool.

**Step 2:** Login again to check the **System Firmware Version, Application Firmware Version and Plug-In Version.**



The screenshot shows the Foscam web interface. The top navigation bar includes 'Live Video', 'Settings', and 'Playback'. The left sidebar contains a menu with 'Setup Wizard', 'Status', 'Device Information', 'Device Status', 'Session Status', 'Log', 'Basic Settings', 'Network', 'Video', 'Detector', 'Record', 'Firewall', and 'System'. The 'Status' and 'Device Information' items are highlighted with red boxes. The main content area is titled 'Device Information' and contains a table with the following data:

Device Information	
Camera Model	C1-Lite V2
Camera Name	C1-Lite
Camera ID	E8ABFA948BDA
Camera Time	2017/04/10 11:46:05
System Firmware Version	1.9.3.18
Application Firmware Version	2.52.2.50
Plug-In Version	5.1.0.12

**Note:**

You'd better re-install the plug-in if it did not upgraded;

**Congratulations**, your camera successfully upgraded to the latest firmware!

**End**

--- By Foscam Technical Support Team